

Our step and our intention on the Japan Sea Rim

Emeritus professor of the Niigata University

Advisor of the Society for Japan Sea Rim Study in Niigata Univ.

Honorable member of the Association for Japan Sea Rim Studies

SHIBUYA Takeshi

Our step

Till 1988, several researchers who have concerned with the Japan Sea Rim through their special field had meetings so often.

On 1988, integrating their studying groups, we established our Society for the Japan Sea Study in Niigata University.

In December 1990, we dispatched the delegation to visit institutions and universities in the Far East of U.S.S.R. and North East area of China, and constituted exchange program with these organizations.

In February 1993, our Society was given the first Japan Sea Rim prize from Governor of Niigata Prefecture.

In July 1993, we dispatched the delegatin for visiting institutions and universities in Hei-long-jiang Province of China.

Starting from 1992, we are publishing a series of the Japan Sea Rim Studies, Discussion Papers.

We have almost monthly meeting for study

In November 1994, We established the Association for the Japan Sea Rim Studies, including scholars, who have the common thema, from all parts of Japan.

Our intention

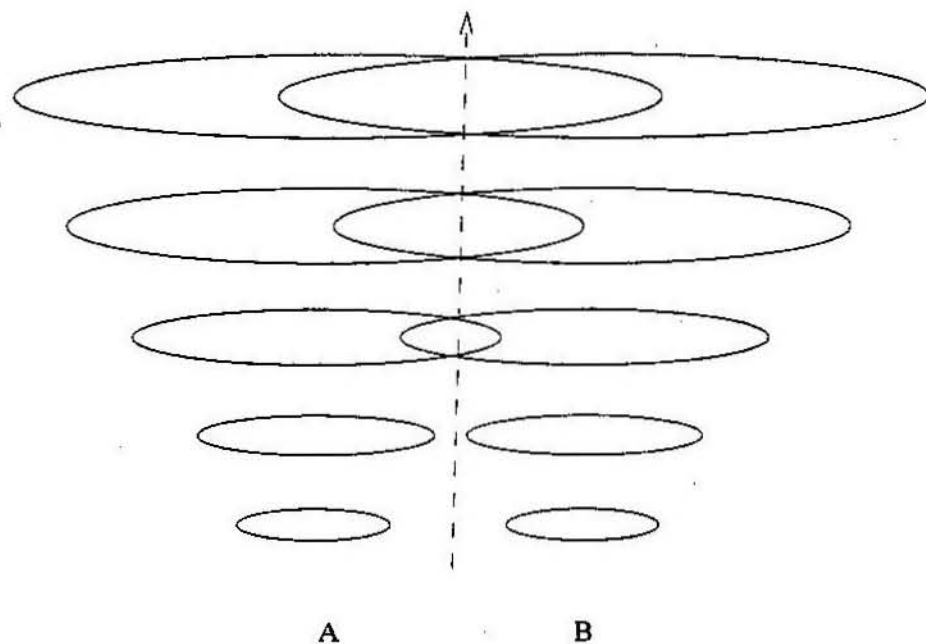
Reflecting on Japan and modern states in the 21st century, two striking features of Japan Sea Rim are 1) periphery in the metropole-periphery" relation and 2) non-exploit place.

Considering at modern nation states since signing Westphalia Treaty in 1648, I would lihe to show Figure 3.

Reflecting on political phenomenon analyzed in traditional political science, I made the Self and Other Relation Model ( Figure 2 ).

In "Self and Other Relation Model", I think political Phenomena has been caused from the principle of behavior in (+-),(+),(--) quadrans. I believe, in 21st century, we have to create the world for the mankind to act together upon the principle of behavior "Live and let live" in (++) quadran ( Picture 1 & Figure 2 ).

Picture 1 Model of "Live and Let live" principle of behavior



Each ellipse give spheres of each person's opinion. From downside , the spheres of each others's opinion move to upside. Each will enlarge the spheres and create the sphere common opinion and enlarge it. A abd B have autonomous ability and they are free.

Figure 2 Self (X) and Other(Y) Relation Model

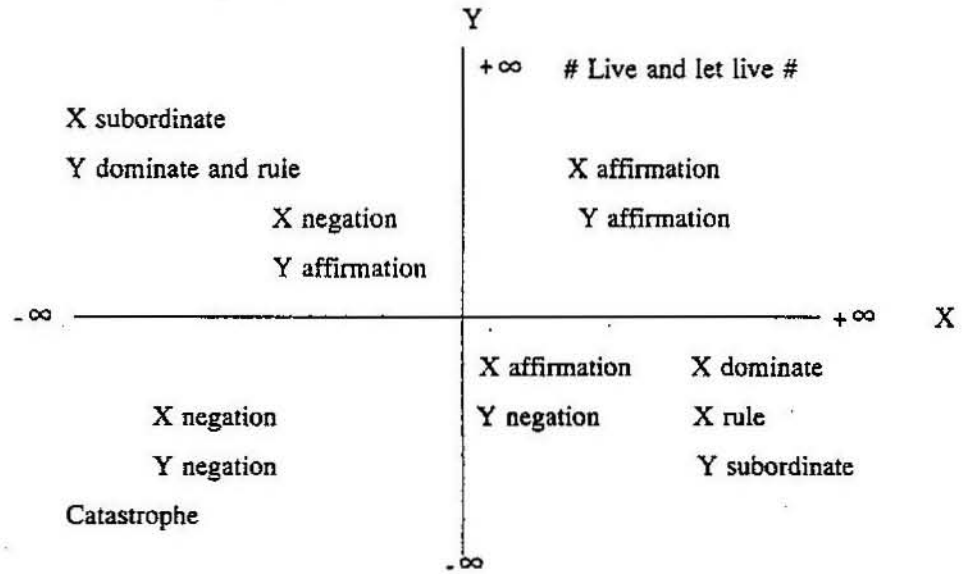
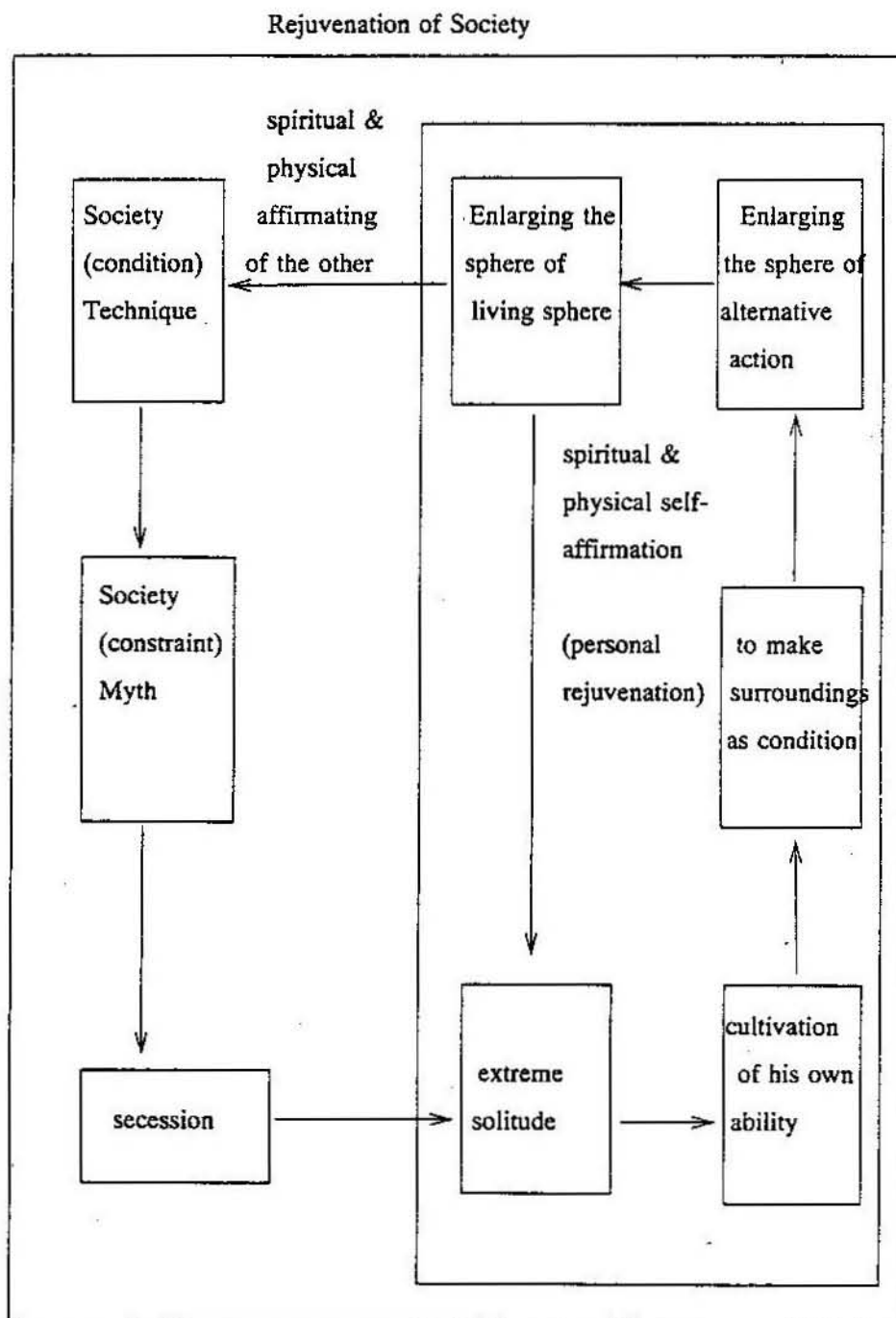


Figure 3 Problems of Modern Nation State

	State of Affaires	Target of social & legal protection	Non-target of social & legal protection
Religion	Combination of State & church or sect	Church or sect protected by State	Heresy Heathen
Race	One race one nation state principle of exclusive self-determination	Main race	Different race Minority
System of Economy	System of private ownership. Capitalism	Owner class Capitalist	Non-owner class Labour

Figure 4 J.J.Rousseau's "Rejuvenation of person and Society"



Picture 5 Model of discussion

